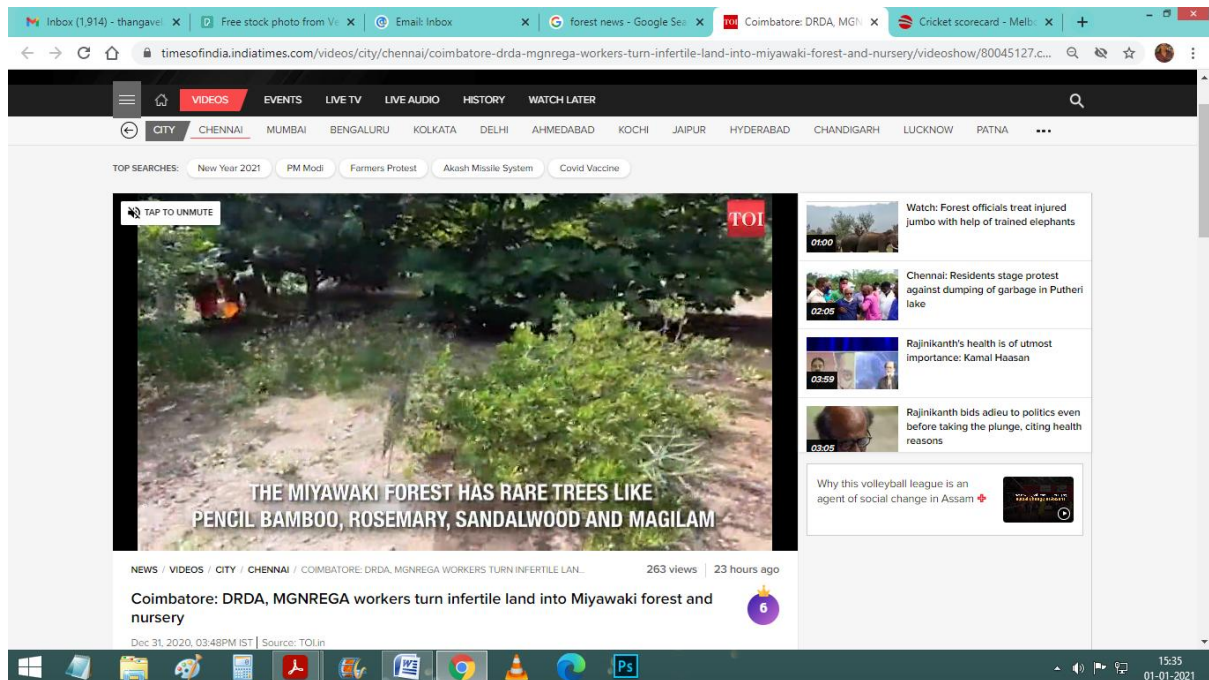


Coimbatore: DRDA, MGNREGA workers turn infertile land into Miyawaki forest and nursery

31 December 2020

About four years ago, a piece of land in the middle of Muthalipalayam village in the district was filled with bushes and reptiles. The land was considered infertile due to its rocky terrain and even the thought of preparing the land for cultivation was never encouraged. But, in 2020, about 3.75 acres of this land developed an orchard, Miyawaki forest and nursery. It was developed and maintained by the District Rural Development Agency (DRDA) under the massive tree plantation scheme with the help of workers from Mahatma Gandhi National Rural Employment Guarantee Act (MGNREGA).



Video Link: <https://timesofindia.indiatimes.com/videos/city/chennai/watch-forest-officials-treat-injured-jumbo-with-help-of-trained-elephants/videoshow/80041426.cms>